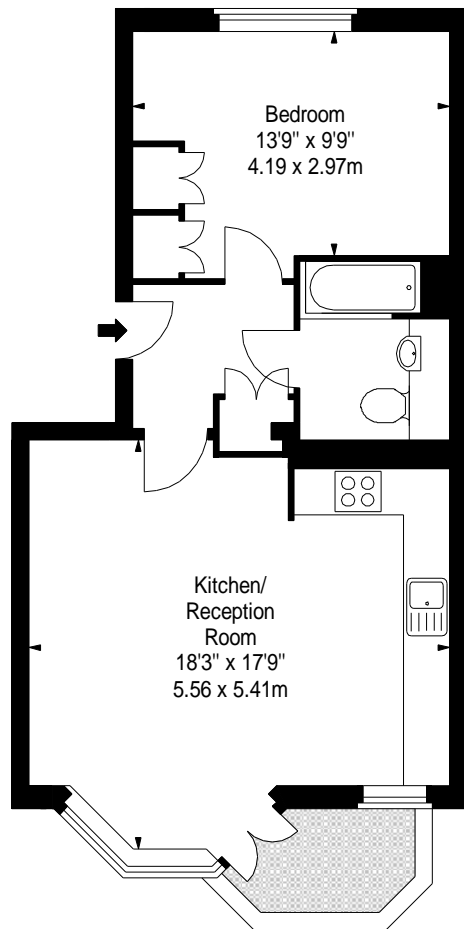


**Flat 4,
Priory Lodge,
Kew Bridge Court, W4**
Approx. Gross Internal Area *
533 Ft² - 49.52 M²



Ground Floor

Illustration For Identification Purposes Only. Not to Scale

* As Defined by RICS - Code of Measuring Practice

B K R
FLOORPLANS

(OFFICES THROUGHOUT THE UK)

T: 0845 257 2023
WWW.BKRFLOORPLANS.CO.UK
2007